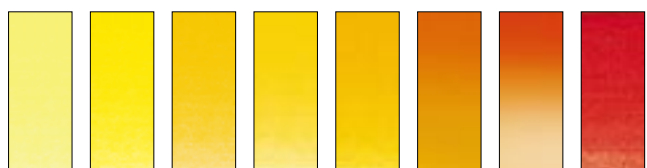


# Griffin Alkyd Fast Drying Oil Colour Range



086 A S2  
O I  
Cadmium  
Lemon

113 A S2  
O I  
Cadmium  
Yellow Light

116 A S2  
O I  
Cadmium  
Yellow Medium

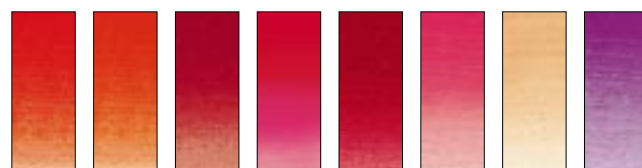
374 A S1  
O II  
London Yellow

111 A S2  
O I  
Cadmium  
Yellow Deep

089 A S3  
O I  
Cadmium  
Orange

100 A S2  
O I  
Cadmium Red  
Light

099 A S2  
O I  
Cadmium Red  
Medium



680 A(v) S1  
O I  
Vermilion Hue

373 A(v) S1  
O I  
London Red

097 A S2  
O I  
Cadmium Red  
Deep

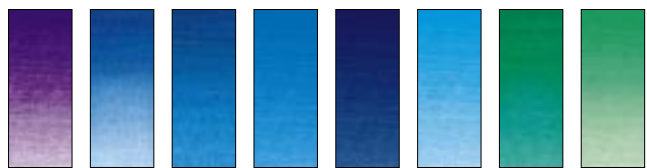
501 A S2  
T I  
Permanent  
Rose

004 B S2  
T  
Alizarin Crimson

579 B S2  
T  
Rose Madder

257 A S1  
O I  
Flesh Tint

194 A S1  
O I  
Cobalt Violet  
Hue



229 A S1  
T I  
Dioxazine  
Purple

263 A(II) S1  
T I  
French  
Ultramarine

514 A S1  
T I  
Phthalo Blue

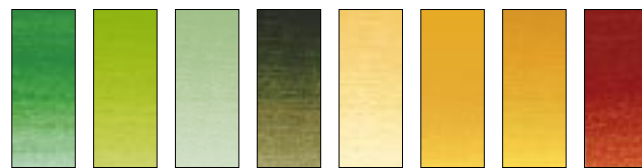
178 AA S3  
T I  
Cobalt Blue

538 A S1  
T I  
Prussian Blue

139 A S1  
O I  
Cerulean Blue  
Hue

522 A S1  
T I  
Phthalo Green

692 AA S3  
T I  
Viridian



483 A S1  
O II  
Permanent  
Green Light

599 B S2  
T  
Sap Green

637 A S1  
T I  
Terre Verte

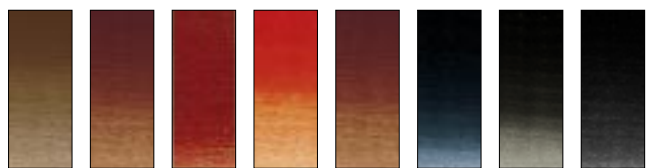
447 B S2  
T  
Olive Green

422 A S1  
O I  
Naples Yellow

744 AA S1  
O I  
Yellow Ochre

552 AA S1  
T I  
Raw Sienna

074 AA S1  
T I  
Burnt Sienna



554 AA S1  
T I  
Raw Umber

076 AA S1  
O I  
Burnt Umber

317 AA S1  
O I  
Indian Red

362 AA S1  
O I  
Light Red

676 AA S1  
O I  
Vandyke  
Brown

465 A S1  
O I  
Payne's Gray

331 AA S1  
O I  
Ivory Black

337 AA S1  
O I  
Lamp Black



644 AA S1  
O I  
Titanium White

## Key to Coding

AA Extremely Permanent  
A Permanent  
B Moderately Durable  
T Transparent/Semi-Transparent  
O Opaque/Semi-Opaque  
S Series Number

ASTM  
I Permanent for artists' use  
II Permanent for artists' use  
Where no ASTM rating is listed, please refer to the Winsor & Newton permanence rating  
(iii) Bleached by acids, acidic atmospheres  
(v) Should not be prepared in pale tints with Flake White, as these will fade

Sizes available:  
20ml Tubes - All colours  
60ml Tubes - All Colours  
120ml Tubes - Whites only  
200ml Tubes - Whites only

This colour chart is produced within the limitations of lithographic colour printing and is intended as a guide only.